

# INDUSTRIAL MODULAR SYSTEM (IMS) ACCESSORIES

## END PLATE

Designed to provide a sealed cover for the open end of IMS enclosures. Provides additional wiring space along the side of the enclosure. Gasket and mounting hardware is included. Made of heavy gauge steel and powder coated RAL 7035 Gray.

| Catalog No.                  | Height (A) | Used With Enclosure Ref. mm Height | Width (B) | Used With Enclosure Ref. mm Depth | Product Code |
|------------------------------|------------|------------------------------------|-----------|-----------------------------------|--------------|
| <a href="#">SCE-EP1805LG</a> | 70.62      | 1800                               | 17.75     | 500                               | P5           |
| <a href="#">SCE-EP1806LG</a> | 70.62      | 1800                               | 21.75     | 600                               | P5           |
| <a href="#">SCE-EP2005LG</a> | 78.48      | 2000                               | 17.75     | 500                               | P5           |
| <a href="#">SCE-EP2006LG</a> | 78.48      | 2000                               | 21.75     | 600                               | P5           |



## PLINTH BASE

Designed to install under an enclosure to provide space for cables to enter from below and raise the enclosure up off the floor. Plinth bases are stackable to acquire desired height off the floor. Black textured powder coat finish.

| Catalog No.                    | Height (A) | Used With Enclosure Ref. mm Height | Width (B) | Used With Enclosure Ref. mm Width | Depth (C) | Used With Enclosure Ref. mm Depth | Product Code |
|--------------------------------|------------|------------------------------------|-----------|-----------------------------------|-----------|-----------------------------------|--------------|
| <b>Single-Door Plinth Base</b> |            |                                    |           |                                   |           |                                   |              |
| <a href="#">SCE-P010605</a>    | 3.94       | 100                                | 23.62     | 600                               | 18.00     | 500                               | P5           |
| <a href="#">SCE-P010606</a>    | 3.94       | 100                                | 23.62     | 600                               | 22.00     | 600                               | P5           |
| <a href="#">SCE-P010805</a>    | 3.94       | 100                                | 31.50     | 800                               | 18.00     | 500                               | P5           |
| <a href="#">SCE-P010806</a>    | 3.94       | 100                                | 31.50     | 800                               | 22.00     | 600                               | P5           |
| <a href="#">SCE-P011005</a>    | 3.94       | 100                                | 39.37     | 1000                              | 18.00     | 500                               | P5           |
| <a href="#">SCE-P011006</a>    | 3.94       | 100                                | 39.37     | 1000                              | 22.00     | 600                               | P5           |
| <b>Two-Door Plinth Base</b>    |            |                                    |           |                                   |           |                                   |              |
| <a href="#">SCE-P011205</a>    | 3.94       | 100                                | 47.24     | 1200                              | 18.00     | 500                               | P5           |
| <a href="#">SCE-P011206</a>    | 3.94       | 100                                | 47.24     | 1200                              | 22.00     | 600                               | P5           |
| <a href="#">SCE-P011605</a>    | 3.94       | 100                                | 62.99     | 1600                              | 18.00     | 500                               | P5           |
| <a href="#">SCE-P011606</a>    | 3.94       | 100                                | 62.99     | 1600                              | 22.00     | 600                               | P5           |
| <a href="#">SCE-P011805</a>    | 3.94       | 100                                | 70.87     | 1800                              | 18.00     | 500                               | P5           |
| <a href="#">SCE-P011806</a>    | 3.94       | 100                                | 70.87     | 1800                              | 22.00     | 600                               | P5           |

## BARRIER PLATE

Designed to serve as a barrier between two IMS enclosure sections. Mounting holes. Gasket is included. Made of heavy gauge steel and powder coated RAL 7035 Gray. Bolt Pack SCE-IMSBK sold separately.

| Catalog No.                  | Height (A) | Used With Enclosure Ref. mm Height | Width (B) | Used With Enclosure Ref. mm Depth | Product Code |
|------------------------------|------------|------------------------------------|-----------|-----------------------------------|--------------|
| <a href="#">SCE-BP1805LG</a> | 70.37      | 1800                               | 17.50     | 500                               | P5           |
| <a href="#">SCE-BP1806LG</a> | 70.37      | 1800                               | 21.50     | 600                               | P5           |
| <a href="#">SCE-BP2005LG</a> | 78.24      | 2000                               | 17.50     | 500                               | P5           |
| <a href="#">SCE-BP2006LG</a> | 78.24      | 2000                               | 21.50     | 600                               | P5           |

# INDUSTRIAL MODULAR SYSTEM (IMS) ACCESSORIES

## SINGLE-DOOR GALVANIZED SUBPANEL

| Catalog No.                 | Height (A) | Ref. mm Height (A) | Used With Enclosure Ref. mm Height | Width (B) | Ref. mm Width (B) | Used With Enclosure Ref. mm Width | Product Code |
|-----------------------------|------------|--------------------|------------------------------------|-----------|-------------------|-----------------------------------|--------------|
| <a href="#">SCE-SP1806G</a> | 66.44      | 1687.50            | 1800                               | 19.69     | 500               | 600 & 1200                        | P5           |
| <a href="#">SCE-SP1808G</a> | 66.44      | 1687.50            | 1800                               | 27.56     | 700               | 800 & 1600                        | P5           |
| <a href="#">SCE-SP1809G</a> | 66.44      | 1687.50            | 1800                               | 31.50     | 800               | 900 & 1800                        | P5           |
| <a href="#">SCE-SP1810G</a> | 66.44      | 1687.50            | 1800                               | 35.43     | 900               | 1000                              | P5           |
| <a href="#">SCE-SP2006G</a> | 74.31      | 1887.50            | 2000                               | 19.69     | 500               | 600 & 1200                        | P5           |
| <a href="#">SCE-SP2008G</a> | 74.31      | 1887.50            | 2000                               | 27.56     | 700               | 800 & 1600                        | P5           |
| <a href="#">SCE-SP2009G</a> | 74.31      | 1887.50            | 2000                               | 31.50     | 800               | 900 & 1800                        | P5           |
| <a href="#">SCE-SP2010G</a> | 74.31      | 1887.50            | 2000                               | 35.43     | 900               | 1000                              | P5           |

## TWO-DOOR GALVANIZED SUBPANEL

| Catalog No.                 | Height (A) | Ref. mm Height (A) | Used With Enclosure Ref. mm Height | Width (B) | Ref. mm Width (B) | 2 Piece Subpanel | Used With Enclosure Ref. mm Width | Product Code |
|-----------------------------|------------|--------------------|------------------------------------|-----------|-------------------|------------------|-----------------------------------|--------------|
| <a href="#">SCE-SP1812G</a> | 66.44      | 1687.50            | 1800                               | 43.31     | 1100              |                  | 1200                              | P5           |
| <a href="#">SCE-SP1816G</a> | 66.44      | 1687.50            | 1800                               | 59.06     | 1500              | *                | 1600                              | P5           |
| <a href="#">SCE-SP1818G</a> | 66.44      | 1687.50            | 1800                               | 66.93     | 1700              | *                | 1800                              | P5           |
| <a href="#">SCE-SP2012G</a> | 74.31      | 1887.50            | 2000                               | 43.31     | 1100              |                  | 1200                              | P5           |
| <a href="#">SCE-SP2016G</a> | 74.31      | 1887.50            | 2000                               | 59.06     | 1500              | *                | 1600                              | P5           |
| <a href="#">SCE-SP2018G</a> | 74.31      | 1887.50            | 2000                               | 66.93     | 1700              | *                | 1800                              | P5           |

## GALVANIZED SUBPANEL

Subpanels are constructed from galvanized steel for direct bonding of electrical components.

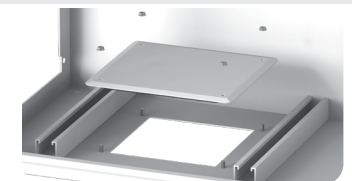
\* 2 piece subpanels are manufactured as two separate pieces and designed to be bolted together. Bolt pack included.



| Catalog No.              | Height (A) | Ref. mm Height (A) | Width (B) | Ref. mm Width (B) | Used With Enclosure Ref. mm Width | Product Code |
|--------------------------|------------|--------------------|-----------|-------------------|-----------------------------------|--------------|
| <a href="#">SCE-GP08</a> | 10.00      | 254                | 11.00     | 279               | 600, 1200                         | P2           |
| <a href="#">SCE-GP16</a> | 10.00      | 254                | 19.00     | 483               | 800, 1000, 1600, 1800             | P2           |

## GLAND PLATES

Gland plates designed for use in our IMS enclosures to allow for easy removal of the plate for installation of cable entry cutouts into enclosure. Includes seamless oil and water resistant gasket to maintain the environmental rating of the enclosure. Powder coated RAL 7035.



| Catalog No.               | Height (A) | Ref. mm Height (A) | Width (B) | Ref. mm Width (B) | Used With Enclosure Ref. mm Width | Product Code |
|---------------------------|------------|--------------------|-----------|-------------------|-----------------------------------|--------------|
| <a href="#">SCE-SGP08</a> | 10.00      | 254                | 11.00     | 279               | 600, 1200                         | P2           |
| <a href="#">SCE-SGP16</a> | 10.00      | 254                | 19.00     | 483               | 800, 1000, 1600, 1800             | P2           |

## SLIDING GLAND PLATE

Sliding gland plates are designed to allow for easy cable entry into enclosure. Allows 6 inch of adjustable opening for cable entry and a 1 inch foam lined edge maintains a tight seal. Powder coated RAL 7035.

